

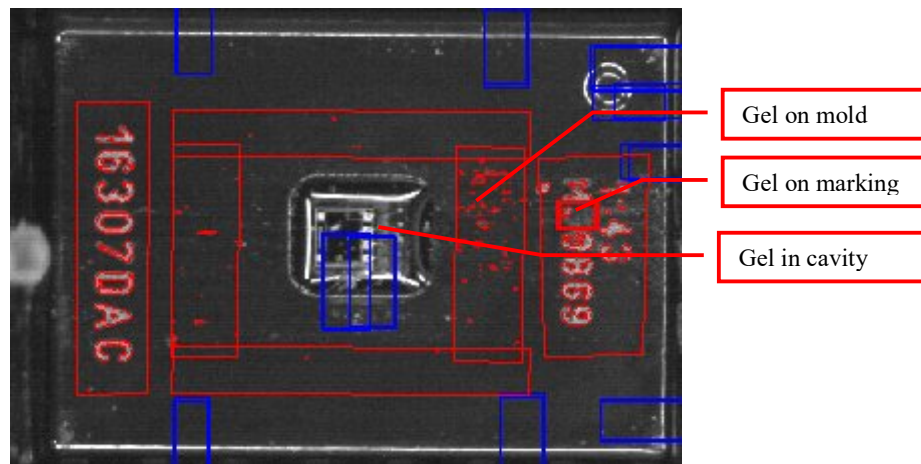
STVision GmbH

In der Mulde 23a
85410 Haag
Germany
www.stvision.de

TEL. 0049- 8167 – 8615
FAX 0049- 8167 – 957714
Mobil 0049- 178- 695 2889



GEL on Package Inspection System (GEL2) for Systemation Handlers March 2016 STVision



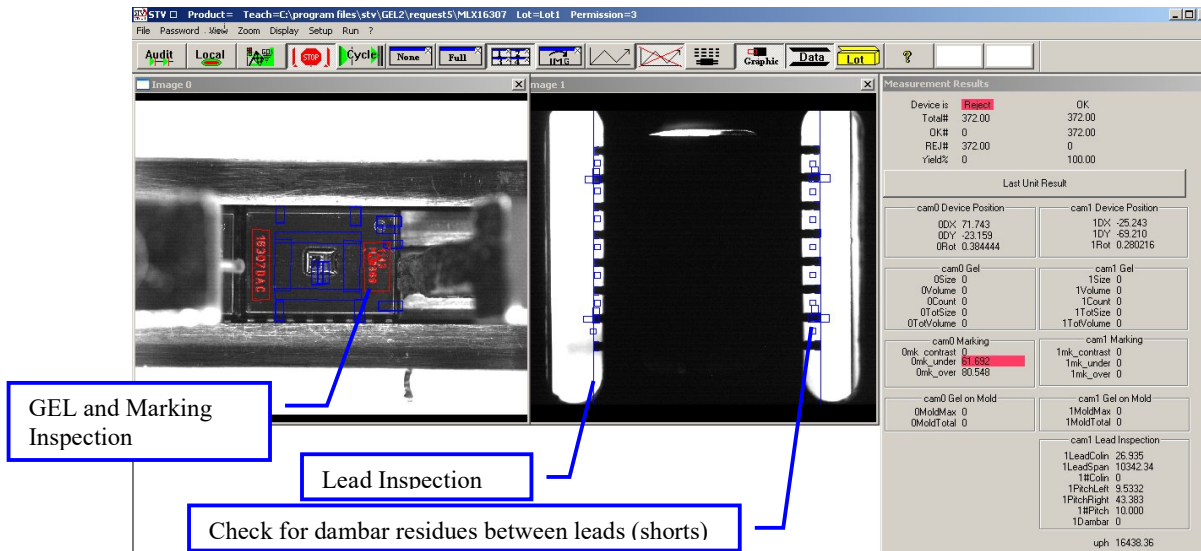
- Presence of GEL in cavity
- Bad GEL spill on mold surface
- Bad GEL on marking pattern
- Unload to OK or REJECT stacks after inspection
- Marking inspection
- Mold surface inspection
- Lead XY colinearity, lead span, lead bent
- Lead 3D coplanarity, seating plane, standoff
- Dambar removal check
- Two levels of inspection quality: standard and high resolution
- 10'000 UPH
- Replaces or add to existing handlers
- Top and / or bottom surface inspection for GEL and marking
- Mechanical integration into standard handlers (Ismeca, ICOS, Systemation)
- No degradation of cycle time

Often, standard industry handlers are proven in production for many years. The machines must continue to run production, but new package requirements demand for new inspection applications. These are often not supported – until now! We deliver special inspection tools for new sensor devices, open cavity components such as pressure sensors etc.

The STV vision cameras operate on modern high speed, high resolution megapixel cameras, standard interface, fast strobed LED illumination, and specific optical components to make GEL on package visible!

The camera modules can be integrated into many handler types. We have good experience to interface them to the existing handler I/O signals. They emulate the old handler cameras 100% and take their job for lead inspection and marking. Plus, they can deliver modern demand of inspection for various types of optical, pressure or acceleration sensors. And this for a fraction of cost, compared to other systems on the market.

And – what we see happening from time to time - if the device sales do not ramp up as expected, the system is easy to change over to produce other devices. This is very important in times of limited financial resources.



Today, many established companies cancel support for older machines. But we don't. Only recently we have upgraded a 20 year old ST60 to produce pressure sensors. If you don't find one for your application, you just get a new one fresh out of production!

Technical Data

Camera	standard	Medium	Hi-res	dimension
Resolution	1300 x 1040	1900x1200	2500x2000	Pixel
Image format	10 x 8	10x6.3	10x8	Mm
Pixel size	8	5.5	4	Micron
Measurement bar width	+/- 4	+/- 3	+/- 2	Micron
Local defects, nodules	<= 8	<= 4	<= 4	Micron
Fotoreisist residues contrast	>= 10	>= 10	>= 10	gv
Exposure time	20	20	20	microsec
Camera speed	<= 15	50	25	Fps
Inspection time	0.5	0.5	0.7	Sec
Operating system	Win10-64			